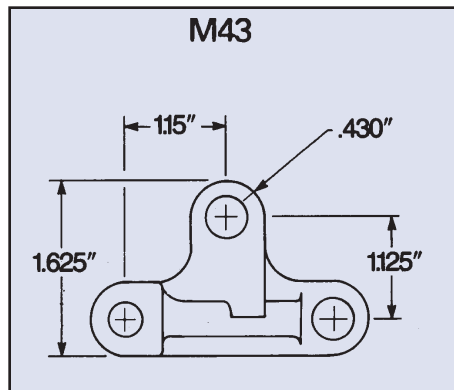
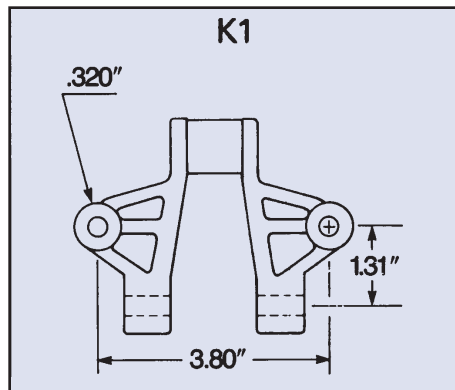
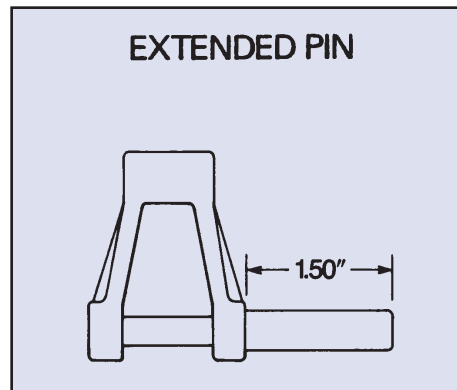
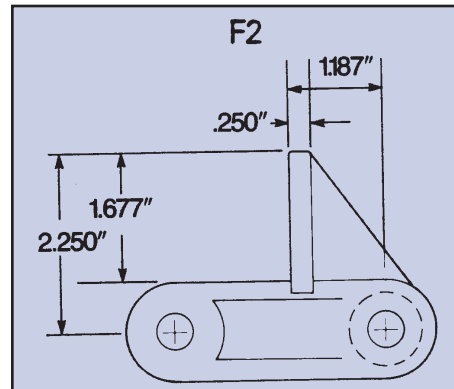
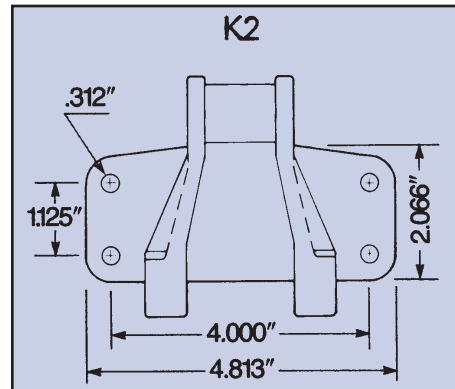
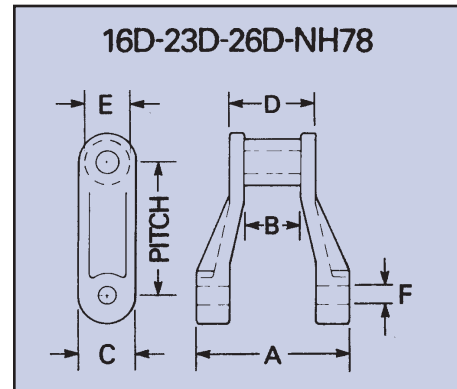


Putnam Precision Drag/Pintel Series manufactured of reinforced nylon with stainless steel pins



Chain Number	Dimensions - Inches										
	Pitch A	Overall Width B	Max. Spkt Face C	Side Bar Height D	Bushing Length E	Bushing Dia F	Pin Dia	Wt. Lb/Ft	Working Load Lbs	Ext. Pin Dia./In.	Attachments Available
16-D	1.630	2.25	.62	.85	1.37	.62	.31	.64	920	5/16, 3/8, 1/2, 9/16	None
23-D	2.308	2.37	.69	1.00	1.39	.81	.37	.76	1100	3/8, 7/16	M43
26-D	2.609	2.94	.87	.94	1.44	.87	.37	1.18	1740	7/16, 1/2, 9/16	F2, K1
NH78	2.609	2.97	1.09	1.14	1.65	.87	.37	1.25	1740	7/16, 1/2, 9/16	F2, K2

Putnam Precision Components and Accessories



Sprockets

820 Series (HS), 821 Series (HSW)

Molded of high-impact nylon, available in 21, 23, 25 and 27 tooth sizes.

NSC/SC/SCS/HRT/882/RCT/16D/23D/26D/NH/PRT

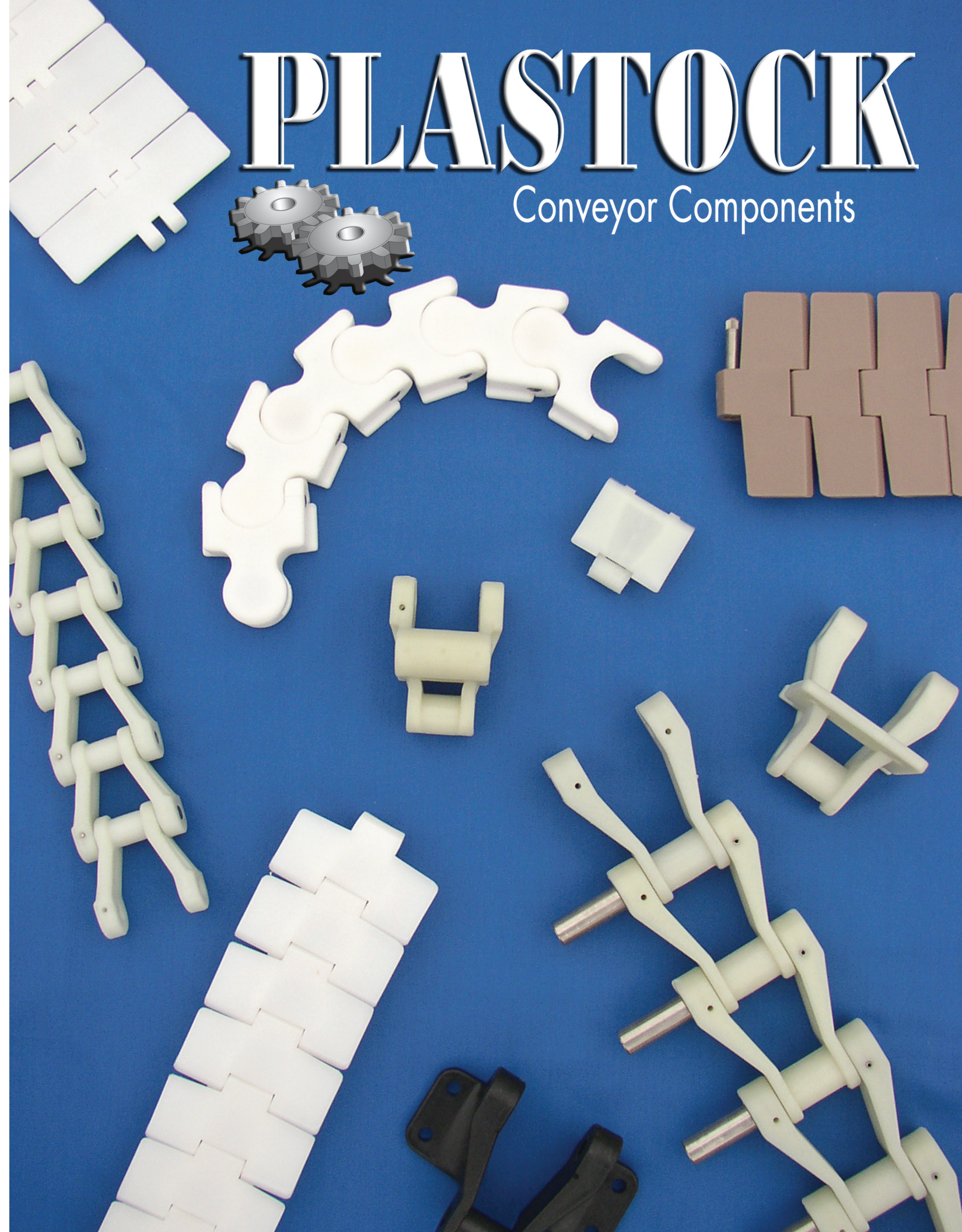
Machined from UHMW-PE or cast nylon 6 long wearing engineering plastics. Available as "A" plates or with bolt on connector hubs. 100% cast nylon 6 sprockets available as one piece "B" or "C" type

PLASTOCK

Plastic Mechanical Drive Components



Manufactured by Putnam Precision Molding
Phone 860-928-7911 ■ Fax 860-928-2229



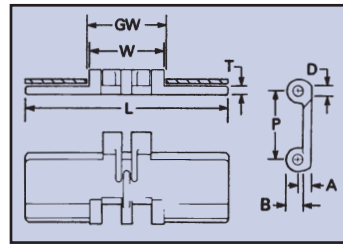
PLASTOCK

Conveyor Components

Putnam Precision Straight Conveyor Chains

820 Series (HS)

3/4" to 7 1/2" Top Plate Width



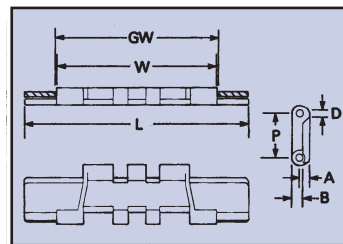
Chain Number	Dimensions - Inches									Wt. Lb./Ft.
	Pitch	Pin Dia.	Guide Width	Chain Width	Width	Thickness	Height Over C/L	Chain Bottom to Plate Bottom		
	P	D	GW	W	L	T	A	B		
150 HS 325	1.50	.250	1.790	1.650	3/4	.156	.280	.375		.55
150 HS 400					4					.62
150 HS 450					4 1/2					.66
150 HS 600					6					.79
150 HS 750					7 1/2					.93

HS - FDA Approved Acetal (White)

HSLF - Low Friction Acetal (Brown)

821 Series (HSW)

7 1/2" to 12" Top Plate Width



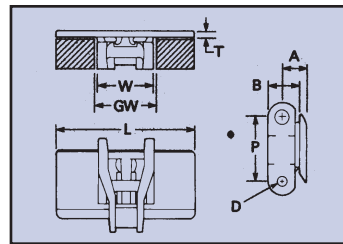
Chain Number	Dimensions - Inches									Wt. Lb./Ft.
	Pitch	Pin Dia.	Guide Width	Chain Width	Width	Thickness	Height Over C/L	Chain Bottom to Plate Bottom		
	P	D	GW	W	L	T	A	B		
150 HSW 750	1.50	.250	5.50	5.375	7 1/2	.188	.313	.375		1.64
150 HSW 1000					10					1.96
150 HSW 1200					12					2.22
LF 821 750	1.50	.250	5.50	5.375	7 1/2	.188	.313	.375		1.64
LF 821 1000					10					1.96
LF 821 1200					12					2.22

HSW - FDA Approved Acetal (White)

LF821 - Low Friction Acetal (Brown)

Removable Top Plate Series (NSC) 1 1/2" Pitch

3/4" to 7 1/2" Top Plate Width



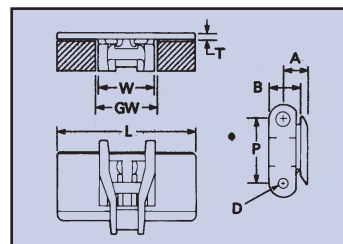
Chain Number	Dimensions - Inches									Wt. Lb./Ft.
	Pitch	Pin Dia.	Guide Width	Chain Width	Width	Thickness	Height Over C/L	Chain Bottom to Plate Bottom		
	P	D	GW	W	L	T	A	B		
150 NSC (Chain Only)								.406 (to attachment lugs-top)		.31
150 NSC 325	1.50	.187	1.452	1.312	3/4	.156	.562	.750		.600
150 NSC 450					4 1/2					.698
150 NSC 600					6					.814
150 NSC 750					7 1/2					.924

NSC - FDA/USDA Top Plate (White)

Base Link - Reinforced Nylon (Natural)

Removable Top Plate Series (SC) 2" Pitch

4 1/2" to 12" Top Plate Width



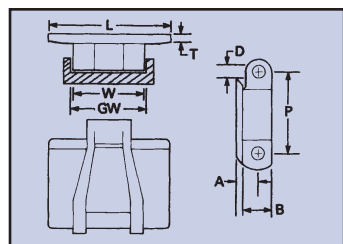
Chain Number	Dimensions - Inches									Wt. Lb./Ft.
	Pitch	Pin Dia.	Guide Width	Chain Width	Width	Thickness	Height Over C/L	Chain Bottom to Plate Bottom		
	P	D	GW	W	L	T	A	B		
200 SC (Chain Only)								.500 (to attachment lugs-top)		.48
200 SC 450	2.00	.312	1.740	1.600	4 1/2	.215	.610	.757		.93
200 SC 750					7 1/2					1.26
200 SC 1000					10					1.53
200 SC 1200					12					1.83

SC - FDA/USDA Top Plate (White)

Base Link - Reinforced Nylon (Natural)

Solid One-Piece Series (SCS)

2.10" Top Plate Width



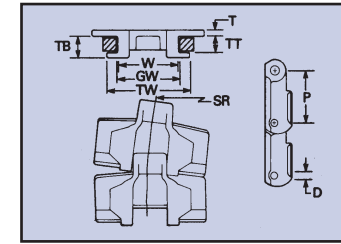
Chain Number	Dimensions - Inches									Wt. Lb./Ft.
	Pitch	Pin Dia.	Guide Width	Chain Width	Width	Thickness	Height Over C/L	Chain Bottom to Plate Bottom		
	P	D	GW	W	L	T	A	B		
100 SCS	1.00	.156	.87	.820	2.10	.105	.290	.340		.23
150 SCS	1.50	.234	1.364	1.310	2.10	.155	.420	.500		.46
200 SCS	2.00	.250	1.650	1.600	2.10	.195	.545	.665		.66

SCS - Reinforced Nylon (Natural)

Putnam Precision Radius Conveyor Chains

880 Tab Series (HRT)

3/4" to 4 1/2" Top Plate Width



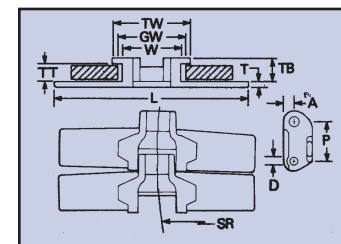
Chain Number	Dimensions - Inches											Avg. Wt. Lb./Ft.
	Pitch	Pin Dia.	Guide Width Curve	Hinge Width	Top Width	Top Thickness	Minimum Radius	Hgt. Over Pin Center	Tab Width	Plate Bottom to: Tab Top Tab Bottom		
	P	D	GW	W	L	T	SR	A	TW	TT	TB	
150HRT 325	1 1/2	.281	1.775	1.688	3/4	.156	18.0	.296	2.406	.437	.593	.62
150HRT 450					4 1/2							.72

HRT - FDA Approved Acetal (White)

HRTLf - Low Friction Acetal (Brown)

882 Tab Series

4 1/2" to 12" Top Plate Width

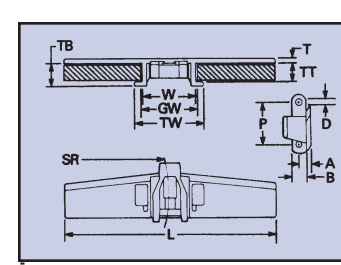


Chain Number	Dimensions - Inches											Avg. Wt. Lb./Ft.
	Pitch	Pin Dia.	Guide Width Curve	Hinge Width	Top Width	Top Thickness	Minimum Radius	Hgt. Over Pin Center	Tab Width	Plate Bottom to: Tab Top Tab Bottom		
	P	D	GW	W	L	T	SR	A	TW	TT	TB	
LF882												
TAB450	1.50	.343	2.281	2.250	4 1/2	.187	24	.375	3	.687	.875	1.36
LF 882					7 1/2		24					1.63
TAB750												
LF882					10		24					1.90
TAB1000												
LF 882					12		30					2.13
TAB1200												

LF882 TAB - Low Friction Acetal (Brown)

Removable Top Plate Series (RCT) 2" Pitch

4 1/2" to 12" Top Plate Width

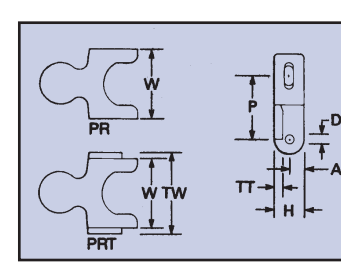


Chain Number	Dimensions - Inches											Avg. Wt. Lb./Ft.	
	Pitch	Pin Dia.	Guide Width Curve	Chain Width	Tab Width	Attachment: Width Thickness	Height Over	Attachment Bottom to: Chain Bottom Tab Top Tab Bottom			Min Sideflex Radius		
	P	D	GW	W	L	T	SR	C/L	TW	TT	TB		
200RC (Chain Only)								.500 (to attachment lugs-top)					.48
200 RCT 450	2.00	.250	2.390	2.250	3.000	4 1/2	2.15	.610	.707	.875	1.075	24.0	.85
200RCT 750						7 1/2							1.15
200RCT1000						10							1.38
200RCT1200						12							1.52

RC/RCT - FDA/USDA Top Plate (White)

Base Link - Reinforced Nylon (Natural)

Pivot Radius Series (PR/PRT) 1.97" Pitch



Chain Number	Dimensions - Inches									Wt. Lb./Ft.
	Pitch	Pin Dia.	Chain Width	Tab Width	Overall Height	Tab Thickness	Weight Over Center of Pin	Min. Radius		
	P	D	W	TW	H	TT	A			
200 PR	1.97	.47	2.15	—	.94	.27	.47	6.0		1.0
200PRT				2.43						

PR - (Without Tabs) Low Friction Acetal White
 PRT (With Tabs) Low Friction Acetal White
 FDA Approved Material Available White
 Available with Molded Pusher or Detainer Lugs